

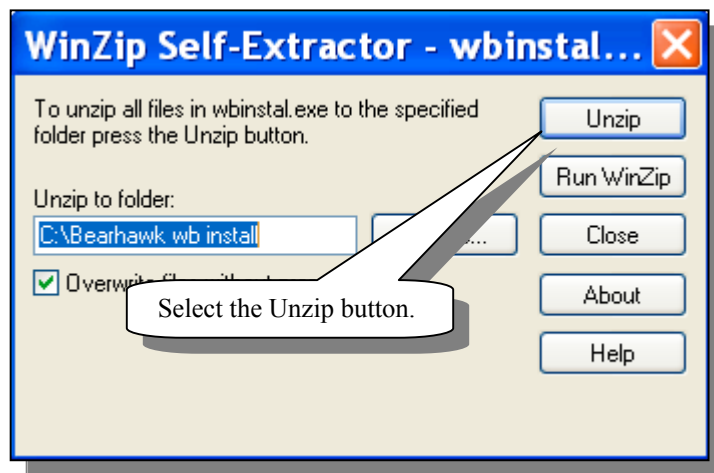
## BEARHAWK WEIGHT AND BALANCE INSTALL PROCEDURE

for installation help, email [ghale5224@aol.com](mailto:ghale5224@aol.com)

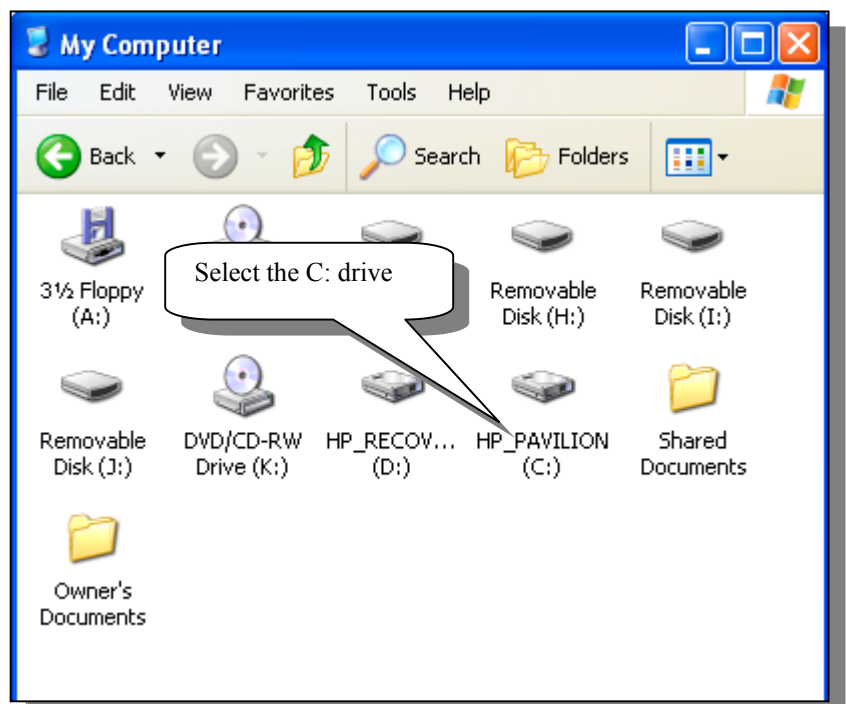
1. Download the WBINSTAL file to your computer's desktop. You can download this to any location on your computer as long as you remember the location.
2. Locate the WBINSTAL icon on your computer's screen and double click it with your mouse. If you cannot find the WBINSTAL icon, use Window's Search procedure on the [Start] button and look for the file WBINSTAL. Double click the found file on the list.



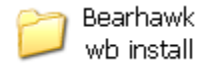
3. Click the UNZIP button.  
The file will be placed in a folder on your C: drive called **Bearhawk wb install**.



4. Close the Self-Extractor window.  
Open My Computer and double click the "C:" drive.



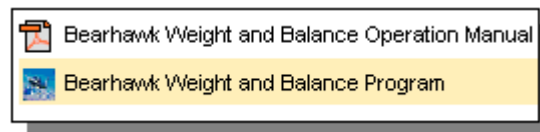
5. Look for the Bearhawk wb install folder and open it.



6. Look for a setup icon and double click it to start the install procedure.



The program will be installed in a folder called BEARHAWK Weight and Balance on your C: drive. The program and operation manual will be placed on your Computer's "All Programs" section on your [Start] button.



You will want to print the operation manual for instructions on using the program. Adobe Acrobat Reader is required to view and print the operation manual. If you do not have a copy of Adobe, you can download a free copy from [www.adobe.com](http://www.adobe.com)

You can remove the Bearhawk wb install folder after you have successfully installed the program.